

2
About Us

16
Slip Cover



6
Custom

12
Decorative



product
catalog
edition 19/20

ALLSTATE CAN CORPORATION

www.allstatecan.com

tincans@allstatecan.com

west coast: 775/841-6846

east coast: 973/560-9030

8
Seamless

Take a virtual tour of our
NJ manufacturing plant!



15
Friction

18
Hermetic

ABOUT US

Our Mission

As a family-owned domestic manufacturer of decorative and industrial cans, our mission is to build long-lasting, personal customer relationships and be the best source of tin packaging.

Superior Quality Standards

Allstate Can follows rigorous quality management policies, standards and objectives to consistently meet or exceed customer requirements.

The Allstate Edge: Our People & Facilities

Manufacturing plants in Carson City, Nevada and Parsippany, New Jersey are equipped with state of the art production lines and staffed with dedicated and experienced professionals. Allstate Can has been producing metal packaging for nearly a century.

Distinctive Value

Allstate looks forward to fulfilling your custom, specialty and stock tin needs. Tins offer a distinctive value that represents high quality. Metal packaging yields greater returns than other options because products packaged in tins tend to demand a higher price. Put Allstate Can Corporation's metal packaging to work for your brand to secure sales and get more return on your packaging investment.

Your Partner

We'll work with you to create a package worthy of your brand. We have a team of professionals experienced in metal lithography and tin fabrication who will guide you every step of the way. Allstate has hundreds of options available from plain tins that are in stock and ready to ship to a myriad of custom tin options. One of Allstate's sales team can provide expert advice and direction on the best solutions to meet your needs.

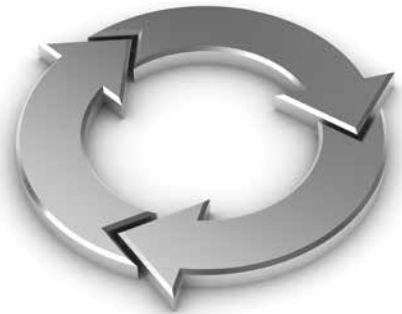
Committed to sustainable packaging solutions

Allstate Can Corporation maximizes its use of renewable and recycled source materials. All of our scrap metal is reclaimed. We source tin that contains approximately 30% recycled content. Additionally, tin-plated steel packaging can be recycled an infinite number of times without loss to its integrity. Allstate Can is dedicated to sustainability.

ENVIRONMENTAL INTEGRITY

Long before it was deemed fashionable or made a requirement to comply with regulations, Allstate Can Corporation had environmental policies in place for all aspects of their business. Assessing environmental impact plays a tremendous role in day-to-day operations with the products Allstate produces and extends to manufacturing procedures, facilities management, personnel management, training, procurement of raw goods and energy consumption. **Allstate reclaims and recycles 100% of corrugated cardboard and steel not used for production.**

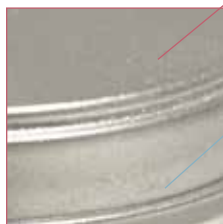
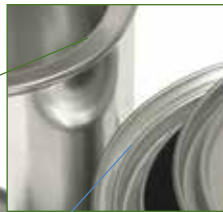
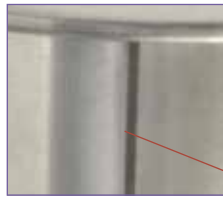
Allstate Can's steel tins are a smart and responsible solution to the ever-increasing consumer demand for green products and packaging. Steel packaging is easy to collect, sort and recycle because of its magnetic properties. It can be recycled an infinite number of times without loss of durability or strength. **Recovered metal feeds the production cycle—it isn't waste—an infinite recycling loop can be created with no "down-cycling".**



Using recycled steel also saves energy. Compared to production from virgin raw materials, producing steel exclusively from scrap requires 75% less energy. Using recycled material, the steel industry saves enough energy in a single year to electrically power more than 18 million homes for a year. The amount of recycled steel recovered in 2005 through packaging (more than 1.4 million tons) would yield enough steel to build 185,000 steel framed homes. Each can recycled substantially reduces the environmental footprint of the next can, and recycled cans are back on the shelf in as little as 60 days. Americans could save more than \$3 billion worth of energy each year by recycling cans.

- The steel can is America's most recycled container; 70% are recycled—the highest recycling rate of any packaging material in the U.S.
- Steel is recycled an infinite number of times without loss of strength or durability
- Every minute, approximately 20,000 cans are recycled in the United States
- Hermetic cans (like coffee cans) offer 100% protection against gas, oxygen, light, moisture or other contamination
- Tin cans can be stacked high on pallets without damage to the package or its contents reducing the need for secondary packaging that could end up in landfills. Storage efficiency and transportation costs can also be reduced as a result of stack-ability

- a** dome cover
- b** skirt
- c** curl
- d** lock seam
- e** interior curl
- f** single friction ring
- g** multiple friction ring
- h** seamed-on end
- i** welded seam
- j** bead
- k** step/stacking cover
- l** exterior bead
- m** full friction plug



TIN CAN ANATOMY

Bead: concave (interior bead ●) or convex (exterior bead ●) area usually 1/8" wide spanning the circumference of the tin to provide additional strength and stability to the tin body

Body: a can without a cover (lid); the base of a container

Cover: a can's lid or closure

Curl: area of tin where the raw edge is rolled in on itself to provide a safe, finished curved edge ● ●

Distortion Printing: printing technique used for making a drawn (seamless) tin in which artwork is intentionally distorted for printing on flat metal. As the seamless tin is drawn upward to form the container, artwork is transformed to its intended representation

Dome: a type of cover characterized by a flat horizontal surface (top) that tapers smoothly onto the skirt (vertical surface) ●

Drawn Tin: see seamless

End: the area of a tin also known as the bottom. Coffee-style hermetic tins generally have two ends. Ends can be attached by seaming them on or crimping ●

Four-Color Process: (4/c) the use of four colors: cyan, magenta, yellow and black to produce an almost unlimited spectrum of colors. Artwork is separated to produce four printing plates, one color is printed at a time at differing screen angles to reproduce the original artwork on sheets of flat metal

Full friction: a plug-style metal cap fits snugly to the interior of the can ●

Hem: similar to a curl, made by folding the raw edge under, to provide a safe, finished flattened edge

Interior Friction: Cover/closure option in which a pliable ring fits to the interior of a tin allowing for a straight-sided slender profile can

Layout: a two dimensional drawing depicting the exact specifications if a tin in its pre-fabricated (flat) state used for setting artwork up to fit the can

Lithography: method of printing on flat metal

Lock-seam: side walls meet and attach by hooking onto one another to form a tin body. Many decorative tins are fabricated in this manner because this particular seam style allows the printed area to meet at the seam ●

Multiple friction: a plug closure fits into a "well" of a seamed on ring. The plug is pressed into the ring and the two surfaces (the outside and inside edge) come into contact with the ring, creating multiple sealing surfaces on the plug/ring combination ●

PMS: use of the "Pantone Matching System" for spot colors that either can't be achieved through 4/c process or is more economical for producing one-, two-, or three- color designs

Pre-press: preparation of artwork prior to printing; includes setting the artwork up in the proper layout, proofing, making films and plates for printing.

Radius: area on an off round tin where the metal bends to form a "curved corner"; on a cover it is the area where the top surface bends or tapers downward to form the skirt

Seamless Tin: constructed by stretching metal rather than seaming on an end to form the body of the can

Single friction: a plug-style metal cap fits snugly into a seamed on ring. The outside edge of the plug presses against the interior edge of the ring, creating one sealing surface ●

Slipcover: cover/closure style in which the cover's skirt (vertical surface) slips over and to the outside of the can body ● ●

Stepped cover: type of slipcover in which a "step" is created between the horizontal surface and vertical surface of the cover so that stacking tins is possible with less likelihood of toppling over ●

Varnish: clear protective coating applied to the metal. Varnish types include gloss, matte, and stipple

Welded Seam: seam type in which side walls attach to one another through the use of heat to form a tin body. The seam area can not be printed as printing ink interferes with the strength of the welded area ●

White Coat: entire surface of the metal is coated with white ink before applying other printing ink colors

White Print: artwork that specifies metallic ink or plain tin in combination with opaque ink requires white prints "sparing out" areas of plain tin or metallic ink to create a base for printing the opaque inks

Q: How are cans measured?

A: Usually, heights of cans are measured without covers on in increments of 1/16". For round cans, diameter is the first listed measurement followed by the height (DxH). Manufacturers use a simplified coding to represent the fraction, for example 301 x 300 is the same as 3-1/16" diameter x 3" high. Fractions can also be reduced, for example 914 diameter is 9-14/16" or 9-7/8".

Q: How do I choose a tin?

A: Hundreds of options are available. The type of tin you choose is dictated by what you want to put inside. Styles available include lock-seam, seamless, and welded as well as numerous cover and closure alternatives from slipcovers to multi-friction plugs. Don't be overwhelmed by the possibilities we'll help guide you through the selection process.

CUSTOM TINS



There are good reasons high end products are packaged in tins. Consumers make an emotional connection with packaging and tins offer a distinctive value that represents higher quality. Metal packaging yields greater returns than other options because products packaged in tins demand a higher price. Allstate Can will work with you and your designers to create a package worthy of your brand. We have a team of professionals experienced in metal lithography and fabrication who will guide you every step of the way.

Put Allstate Can Corporation's metal packaging to work for you to secure sales and get a higher return on your packaging investment. Allstate has hundreds of options available. The type of tin you choose is dictated by the product you want to put inside. One of Allstate's sales team can provide expert recommendations and direction on the best solutions to meet your needs.



- Elevated appeal
- Enhanced value
- Intensified brand recognition
- Product distinction
- Reusable
- Recyclable
- Recycled steel content

Q: What is the difference between “custom”, “stock” and “standard” tins?

A: A can is considered “custom” if it is a size for which tooling does not already exist, custom printing or embossing is required or modifications to existing tooling is necessary. Stock tins are normally available in our inventory and ready to ship. Standard tins are tin can styles that are not inventory items but rotate through our production schedule frequently.

Q: How long does it take to get tins?

A: Lead time for standard or stock items is usually same day-to-3 weeks; custom items are generally 8-12 weeks from the time artwork is approved and depending upon the complexity of the project. Although we strive to maintain inventories of stock and standard items, demand may exceed supply. When this occurs, we will quote lead times. Lead times may extend by two-three weeks during peak demand, July-November and January-March.

Custom tins are a marvelous way to project a dazzling image and increase brand awareness. The natural surface shine and reflection of tins has a way of capturing the consumer's attention like no other packaging can. There are limitless ways to achieve extraordinary results and lasting impressions when designing a custom tin.



Available options include:

- Custom graphics
- Four-color process inks
- Pantone® (PMS) & special match inks
- Transparent inks
- Gloss, matte, textured & specialty varnishes
- Spot varnish
- Single- and multi-level embossing
- Perforations and coin slots
- Custom tooling and shapes
- Unique closure systems
- Knobs, latches, handles
- Hinges
- Height adjustments to existing diameters

Minimum order requirements are typically in the neighborhood of 10,000 pieces, depending on can size. Lead times also vary depending on the nature of the customization and can be from as little as 4 weeks from approved tooling and artwork up to 14 weeks.

Q: How are tins printed?

A: Most color printing is four-color process—the combination of cyan, magenta, yellow, and black to produce a virtually unlimited spectrum of color. Printing with special match (PMS), transparent and metallic inks is also available. Customers format their artwork to an Allstate supplied layout, our pre-press operation separates the art into its four colors from which printing plates will be ultimately made. A proof is provided for approval, printing plates are made, then each color is laid via a printing press on flat sheets of metal. These flat pieces of metal are subsequently trimmed or “slit” and formed into the final tin shape.

Q: Is there a minimum order requirement for custom tins?

A: The general rule of thumb is 5,000-10,000 pieces for most round welded and lock-seam cans and 10,000-25,000 pieces for irregularly shaped tins. Another guideline holds that the smaller the tin, the larger the minimum order requirement.

SEAMLESS TINS

Constructed from a single piece of tin drawn or "stretched" to form the body of the can, Allstate's superior quality drawn tins have no seams which means no leaks. An array of diameters and heights of flat and deep style seamless cans are stocked* in a varnished tin finish. See next page for sizes. All surfaces of our seamless tins are coated with an FDA approved clear varnish.

Don't see what you need? Call us for a quote.

Great for

- CDs & DVDs
- Candles
- Confections
- Cosmetics
- Jewelry
- Laboratory needs
- Mints
- Ointment
- Soldering paste
- Spices
- Tea
- More!

Color printing is available on a custom basis. Graphics and artwork are "distortion printed" on flat sheets of metal and when the metal is drawn to form the tin, the artwork is no longer distorted.

FLAT SEAMLESS TINS	DIAMETER x HEIGHT	CASE WEIGHT	CASE PACK	FOB
A 1/4 oz Flat Seamless	1-5/16 x 7/16"	34 lbs	1800 Covers on Cans	NV or NJ
B 1/2 oz Flat Seamless	1-1/2 x 5/8"	43 lbs	1800 Covers on Cans	NV or NJ
C 1 oz Flat Seamless	1-15/16 x 11/16"	46 lbs	1200 Covers on Cans	NV or NJ
D 2 oz Flat Seamless	2-7/16 x 13/16"	26 lbs	432 Covers on Cans	NV or NJ
E 4 oz Flat Seamless	3-1/8 x 1-1/8"	40 lbs	432 Covers on Cans	NV or NJ
F 8 oz Flat Seamless	4 x 1-1/8"	17/36 lbs	224 Cans/672 Covers	NV or NJ
G 10 oz Flat Seamless	5-1/8 x 3/4"	22/33 lbs	240 Cans/480 Covers	NV or NJ
DEEP SEAMLESS TINS				
H 1 oz Deep Seamless	1-9/16 x 1"	22 lbs	720 Covers on Cans	NV or NJ
I 2 oz Deep Seamless	2 x 1-7/16"	24 lbs	432 Covers on Cans	NV or NJ
J 4 oz Deep Seamless	2-1/2 x 1-5/8"	25 lbs	288 Covers on Cans	NV or NJ
K 6 oz/72mm Deep Seamless	2-13/16 x 1-11/16"	22/33 lbs	384 Cans/1152 Covers	NV or NJ
L 8 oz/80mm Deep Seamless	3-1/8 x 2"	28 lbs	270 Covers on Cans	NV or NJ
M 10 oz Deep Seamless	3-1/8 x 2-1/4"	26 lbs	240 Covers on Cans	NV or NJ
N 16 oz Deep Seamless	3-3/4 x 2-1/2"	18 lbs	120 Covers on Cans	NV or NJ
O 20 oz Deep Seamless	3-3/4 x 3-1/16"	17 lbs	96 Covers on Cans	NV or NJ
CRYSTAL CLEAR™ WINDOW TINS				
P 1/4 oz Flat Seamless	1-5/16 x 7/16"	32 lbs	1800 Covers on Cans	NV or NJ
Q 1/2 oz Flat Seamless	1-1/2 x 5/8"	43 lbs	1800 Covers on Cans	NV or NJ
R 2 oz Flat Seamless	2-11/16 x 13/16"	30 lbs	432 Covers on Cans	NV or NJ
S 60 mm Seamless	2-3/8 x 1-11/16"	26/30 lbs	1152 Covers, 576 Cans	NV or NJ
T 72mm/6 oz Seamless	2-13/16 x 1-11/16"	35/22 lbs	1152 Covers, 384 Cans	NV or NJ
U 80mm/8 oz Seamless	3-1/8 x 2"	31/20 lbs	864 Covers, 270 Cans	NV or NJ
V 16 oz. Seamless	3-3/4 x 2-1/2"	32/13 lbs	576 Covers, 120 Cans	NV or NJ
W 4 oz. Square Seamless Window	2-3/8 x 2-3/8 x 1-3/8"	35 lbs	432 Covers on Cans	NV or NJ
X 8 oz. Square Seamless Window	3 x 3 x 1-15/16"	28 lbs	216 Covers on Cans	NV or NJ
SLIDER TINS				
Y Small Slider Tin	1-7/8 x 15/16 x 3/8"	25 lbs	1200	NV or NJ
Z Large Slider Tin	3-1/8 x 1-3/8 x 3/8"	43 lbs	1152	NV or NJ
LABEL-IT LAB TINS				
AA 1/2 oz Label-It	1-9/16 x 1/2"	21 lbs	864 Covers on Cans	NV or NJ
BB 1 oz Label-It	1-13/16 x 5/8"	29 lbs	864 Covers on Cans	NV or NJ
CC 2 oz Label-It	2-1/2 x 13/16"	48 lbs	864 Covers on Cans	NV or NJ
SCREW TOP TINS				
EE 1/2 oz Screw top	1-1/2 x 5/8"	34 lbs	1200	NV or NJ
FF 1 oz Screw top (Special Order)	1-15/16 x 11/16"	24 lbs	576	NV or NJ
GG 2 oz Screw top	2-7/16 x 13/16"	26 lbs	432	NV or NJ
HH 60mm Screw top	2-3/8 x 1-11/16"	50 lbs	576	NV or NJ
II 80mm Screw top** **Specify solid cover (available) or window cover (special order)	3-1/8 x 2-1/16"	31 lbs	216	NV or NJ
JJ 306 Screw top	3-3/8 x 4-1/16"	32 lbs	120	NV or NJ
HINGED TINS				
KK Mini Hinged Tin	2-5/16 x 1-7/8 x 1/2"	34 lbs	720	NV or NJ
LL Medium Hinged Tin	3-11/16 x 2-5/16 x 3/4"	40 lbs	432	NV or NJ
MM Hinged Window Tin	5-1/4 x 3-3/8 x 7/8"	33 lbs	192	NV or NJ
NN Large Hinged Tin	7-1/4 x 5-1/4 x 1"	33 lbs	96	NV or NJ



l see screw top heading available with window or solid cover**



l available with window or solid cover**



SEAMLESS TINS



CANDY TINS



Allstate's tins are food safe.

CrystalClear™ tins incorporate windows in the covers constructed of food-grade APET. Covers and bodies are either hemmed or curled to provide a safe edge.

Solid top lids and CrystalClear™ window lids are available in an array of tin sizes. Shapes include round, square and oblong slider tins. Custom printing is available quantities of 10,000+.

CANDLE TINS

Candles conjure different emotional responses for everyone who delights in them. They're warming, romantic, inspiring, relaxing, comforting, symbolic. Packaging should be a reflection of your image and the message you want to convey and tins provide the perfect solution for branding your story. Tins have a chameleon-like quality that few other packaging can boast: tins can transform from elegant to rustic and anything in-between. Candle makers and fragrance packagers are faced with a myriad of complex decisions in a production environment. Selecting tins as your packaging solution can alleviate the stress of at least one of them. The tin container eliminates the worry over "wet spots" commonly found in glass container candles, and does not require a second pour.

- Easily labeled or custom printed
- Wide variety of tin sizes and shapes
- Eliminates jars breaking in transit
- Shipping costs may be reduced because tins weigh less than many other packaging options.

Allstate offers low minimum order requirements on our brushed silver stock tins. Samples are gladly provided!

SPICE TINS

Allstate Can Corporation manufactures an expansive selection of tins suitable for packaging herbs and spices from two-piece seamless tins to hermetic cans for bulk spices that seal in air-tight freshness, screw top tins

and interior seal tins. Many tins have low minimum purchase requirements and are in stock and ready to ship. We also offer custom sizes, shapes and printing and embossing. Tins are easily labeled or custom printed, there are a wide variety of sizes and shapes available, and they eliminate the issues of jars breaking in transit. Your shipping costs may even be reduced because tins weigh less than many other packaging options. Tins are infinitely recyclable and all of Allstate Can's tins are made of recycled steel. Heat, light, moisture and air are enemies of herbs and spices. Exposure to these elements greatly reduces quality, color, flavor, and essential oil content. Experts agree, spices stay fresher longer when stored in dark containers to protect them. One study, carried out over a six-year period, showed

that spices kept in clear containers lost 47% of their essential oils, while those kept in dark containers such as tins, lost only 0-5% of their essential oils regardless of whether the spice was powdered or whole.*

*Anise, cardamom, fennel, cumin, sweet marjoram, mace, cloves, pepper, allspice and cinnamon were among the tested spices.



DECORATIVE COOKIE TINS

Allstate's decorative tin line offers a solution whether you need candy tins, cookie tins, cake tins, gift packaging, popcorn pails, nut cans, candle tins, snack tins or promotional packaging. Our decorative tins are ideal for gift baskets and an elegant corporate gifts. Packaging your products in Allstate Can's beautiful decorative tins will ensure the perception of a premium product and promote sales.

INKS AND COATINGS ARE FOOD SAFE AND FDA APPROVED



DESCRIPTION	DIAMETERx HEIGHT	CASE PACK	CASE WEIGHT
1 lb. Petite	6-1/8 x 1-13/16"	36/Carton	11 lbs
1 lb.	6-5/8 x 1-13/16"	24/Carton	9 lbs
2 lb.	6-5/8 x 2-15/32"	24/Carton	11 lbs

BE CREATIVE

Form follows function. No matter how great your package looks, you will fail your customer if it doesn't function as expected. Look to other products that get it "right". Examples abound of good (and bad) packaging. Want to package your special gourmet spice blend? Venture outside of your product arena and make notes of what you like; look at CD covers for your favorite band or take a run down the skincare aisle of your local pharmacy. What stands out? Don't limit your review to other packaging; ads, magazine design, even scrap booking how-to books will offer creative insight. You'll find inspiration everywhere.

Size matters. Choose a tin size and style that makes the most sense for your product. Your budget and quantity requirements will also play a role in determining whether a standard, stock or custom tin is best. To print or not to print. Considerations such as quantity, budget, brand image play a part in this decision. Labels are recommended for quantities less than 10,000 as a more economical option to printing directly on the tin. Allstate's experienced sales team will advise you on your options and offer suggestions based on your specific needs.

Content. What goes on the label? Your product name and contact info is key (don't forget your website!). Other considerations: safety information, ingredients, bar code, directions, and net weight. If you are marketing a food or pharmaceutical product, the FDA is the best resource for determining requirements. Make a list of everything you need to include and write copy. At this stage, content is king, don't worry about the design.

Image. Think about the brand image you want to convey. Is your product and company upscale and elegant? Fun and flirty? Cutting edge? Pure and simple? Or does your product beckon to nostalgic tradition? When you think of these descriptions, what pops into your mind? What typography do you envision? What color(s) speak to your image? Do you want a photograph of your product on the label?

Rough draft. Don't worry if you aren't "artistic", just start sketching. Your sketches can be crude; squiggly lines for type, a triangle that represents your logo. The main thing at this stage is the layout: placement and size of your logo, product name, contact info.. everything that needs to fit. Experiment with color combinations. If you're more comfortable in front of a computer than you are with holding a colored pencil, by all means do your sketches electronically!

Design. At this point you may need to hire a graphic designer depending on your level of expertise. Use your sketches as a guide and you're on your way to a professional and enticing package. Request templates from Allstate Can if you are planning a custom tin, or from your label printer if you've opted to use labels. Allstate Can's pre-press department prefers receiving electronic files in Adobe Acrobat, Photoshop or Illustrator and our pre-press department is happy to provide guidance for setting up electronic files.

Benefits of selecting stock or standard tins:

- Lower minimum purchase requirements for standard and stocked tins
- Economically test market new products before investing in custom printed tins
- Reduce your inventory overhead by using one tin size with interchangeable labels
- Shorter lead times

Benefits of selecting custom tins:

- Convenience (no labeling operation required)
- Four color process as well as special match PMS colors are available
- As quantity increases, printing directly on the tin becomes more economical than labels
- All surfaces of the tin may be printed

INTERIOR SEAL TINS



Terrific for:

- Candies
- Cookies
- Cosmetics
- Powdered mixes
- Spices
- Tea



A great container that consumers call "fresh!" Similar to a full friction tin except a pliable ring fits to the interior of the can allowing for a straight-sided slender profile. The interior ring is made of low density polyethylene.

Standard diameters available include 1-15/16", 2-11/16", 3", 3-3/4", 4-1/4", 5-1/8" and 6-1/8"; heights can be adjusted to suit your needs. 1-15/16" diameter is available with either plastic ring or metal

DIAMETER x HEIGHT	AVAILABILITY	COVER COLOR/CAN COVER	FOB
1-15/16" x 5"	Stock	Varnished Tin/ Varnished Tin	NV
2-11/16" x 5-1/16"	Special Order	Customizable	NV or NJ
3" x custom	Special Order	Customizable	NV
3-3/4 x 3-1/16" (seamless)	Special Order	Varnished Tin/Varnished Tin	NV or NJ
4-1/4 x 4"	Special Order	Black, Black & White Stripe	NJ
5-1/8" x custom	Special Order	Customizable	NV or NJ
6-1/8 x 1-13/16"	Special Order	Black, Black & White Stripe	NJ

TAPERED CANS

EXCITING BENEFITS!

Tapered shape allows nesting for space-saving freight and storage freeing up precious warehouse space. Twenty-five tapered pails, when nested, take up less space than three traditional round tins!



- Top diameter 5-1/16"
- Bottom diameter 4"
- Height 4-11/16"
- Snap-on slip cover
- Available with or without handle
- Lock side seam

- Top diameter 7"
- Bottom diameter 6-1/8"
- Height 5-1/4"
- Three cover options:
- Window
- Full Friction Plug
- Snap-on Slip Cover
- Can be hermetically sealed for airtight freshness, especially important when packing peanuts or coffee



- Top diameter 10-1/8"
- Bottom diameter 9-5/8"
- Height 8-1/2"
- Slip cover
- Welded Side Seam

FRICTION TINS



Multiple Friction—plug-style metal cap fits into a “well” on the seamed on ring. The plug snaps into the ring and two surfaces (the outside and inside edge) come into contact with the ring, creating two sealing surfaces on the plug/ring combination. Most paint cans are constructed in this manner.

Full Friction—plug-style metal cap fits against the interior surface at the top of the can without the use of a ring. Plug design provides an extra snug fit to prevent leakage. Commonly used for medical and military applications, hazardous materials, and metals.

Standard diameters: 404, 506, 603, 610, 707

Benefits & Features		Common Uses		
• Tamper resistant	• Safe and sanitary package	• Adhesives	• Chemical overpacks	• Paint
• Fluid containment	• Available lined or unlined	• Candy & confections	• Flavoring	• Powdered mixes
• Durable	• Environmentally friendly	• Coffee	• Lacquer	• Syrup
• Corrosion resistant		• Coatings	• Nuts	• Wax
			• Oil	

Standard* Multiple-Friction Sizes

DIAMETER x HEIGHT	ITEM #	DESCRIPTION	FOB	CASE PACK
4-1/4 x 3-1/2"	404M308DACO	1# Plain	NJ	112, plugs included
5-3/8 x 3-1/16"	506M301	Flat Quart Plain	NJ	160, plugs separate
5-3/8 x 3-1/16"	506M301LP	Flat Quart Lined	NJ	160, plugs separate
5-3/8 x 5-7/8"	506M514DACO	1/2 Gallon Plain	NJ	75, plugs included
5-3/8 x 5-7/8"	506M514LPDACO	1/2 Gallon Lined	NJ	75, plugs included
6-5/8 x 4"	610M400DACO	1/2Gallon Short Plain	NJ	70, plugs included
6-5/8 x 9-1/2"	610M908	Imperial Gallon	NJ	30, plugs separate

Standard* Plug Sizes

DIAMETER	ITEM #	DESCRIPTION	FOB	CASE PACK
4-1/4"	4043MCPBPB	Quart Plug	NJ	600
5-3/8"	5063MCPBP	1/2 Gal. Plug Plain	NJ	342
5-3/8"	5063MCLP	1/2 Gal. Plug Lined	NJ	342
6-5/8"	6103MCPBP	Gallon Plug Plain	NJ	360

* Allstate makes every attempt to maintain inventory of standard items. Occasionally demand may exceed supply and we'll be happy to quote lead times. Heights of lock-seam and welded cans may be adjusted and are available by special order. Longer lead times may apply

SIZE (DIA.x HEIGHT)	ITEM #	FOB	COVER STYLE(S)
2-11/16 x 5-1/16" (special order)	211S501	NV or NJ	Flat, Step, or Dome
3 x 1-1/2" (special order)	300S108	NV	Step
3 x 2" (special order)	300S200	NV	Step
3 x 3-1/8" (special order)	300S302	NV	Step
3-3/8 x 2-1/4"	306S204	NV	Step or Dome
3-3/8 x 3"	306S300	NV	Step or Dome
3-3/8 x 3-1/2"	306S308	NV or NJ	Step or Dome
3-3/8 x 4-1/16"	306S401	NV or NJ	Step or Dome
3-3/8 x 6-3/4"	306S612	NV	Step or Dome
3-7/8 x 2-5/8"	314S210	NV	Consult Factory
3-7/8 x 2-7/8"	314S214	NV	Consult Factory
4-1/4 x 4"	404S400	NV or NJ	Step or Dome
5-1/2 x 3-3/4"	508S312	NJ	Step
5-7/8 x 1-15/16" (special order)	514S115	NJ	Dome
6-1/8 x 1-13/16"	602S113	NV or NJ	Step or Dome
6-1/8 x 3"	602S300	NV or NJ	Step or Dome
6-1/8 x 5"	602S500	NV or NJ	Step or Dome
6-1/8 x 5-1/4"	602S504	NV or NJ	Step or Dome
6-5/8 x 1-13/16"	610S113	NJ	Dome
6-5/8 x 2-15/32"	610S2075	NJ	Dome
7-1/4 x 2-5/8"	704S210	NJ	Dome
7-15/16 x 2-3/4" (special order)	715S212	NJ	Dome
7-1/2 x 6 1/8"	708S602	NJ	Step or Dome
8-1/2 x 4-3/4"	808S412	NJ	Step
9-7/8 x 3"	914S300	NJ	Dome
9-7/8 x 8" GOLD FINISH IS STANDARD	914S800	NJ	Snap-on or Dome
9-7/8 x 12-1/2"	914S1208	NJ	Snap-on or Dome
12-3/16 x 15-1/2" (not shown)	1203S1508	NJ	Step

Versatile containers with welded seams or "lock" seams are available in many diameters and heights, from 2-11/16" x 1 1/2" to 12 3/16" x 17". Heights may be adjusted to meet your custom requirements.

Many sizes are in stock* and ready to ship!

*Occasionally demand may exceed supply and we'll be happy to quote lead times.



Plain Tin/Silver
2 lb. Rectangle (5 5/8 x 8 5/8 x 2 1/2")



2 11/16 x 5 1/16"
(211 x 501)



3 3/8 x 3 1/2"
(306 x 308)



4 1/4 x 4"
(404 x 400)



5 1/2 x 3 3/4"
(508 x 312)



5 7/8 x 1 7/8"
(514 x 114)



6 5/8 x 1 13/16"
(610 x 113)



6 5/8 x 2 15/32"
(610 x 207.5)



7 1/4 x 2 5/8"
(704 x 210)



7 1/2 x 6 1/8"
(708 x 602)

Common Uses

- Auto body filler
- Candles
- Coffee
- Confections
- Cookies
- Cosmetics
- Dry mixes
- Industrial wax
- Ink
- Petroleum products
- Chemical products
- Nuts
- Snack foods
- Tea
- Wax
- Wine bottles

SLIP COVER CANS



Plain Tin/Silver*
1 lb. Square (6 x 6 x 1 7/8")
 * Special order, 5,000 minimum



6 1/8 x 1 13/16"
(602 x 113)



6 1/8 x 3"
(602 x 300)



6 1/8 x 5"
(602 x 500)



7 15/16 x 2 3/4"
(715 x 212)



9 7/8 x 3 1/2"
(914 x 308)



9 7/8 x 8"
(914 x 800)

9 7/8 x 12 1/2"
(914 x 1208)

HERMETIC OPEN TOP CANS



Air-tight for Extended Shelf Life

The shelf life of dry foods kept in hermetic tin cans is incredibly long compared to other storage methods. Rice, sugar, and many varieties of beans stored in properly sealed hermetic cans will store up to 30 years if left unopened. Once opened and sealed with a plastic or metal over cap these items will keep from 1-5 years. Dehydrated beef,

ham, and sausage and freeze dried banana slices, blueberries, broccoli, cauliflower, celery, green beans, peach slices and potatoes will last up to 25 years in an unopened can. Several standard hermetic style cans with a variety of end options are available from Allstate Can Corporation.

Perfectly airtight tins provide the ability to vacuum pack your product. Beaded and straight-sided options are available as well as seamed or EZ Open style ends. Special interior and exterior coatings are available.



Benefits & Features

- Long shelf life
- Tamper resistant
- May be vacuum packed
- May be hot filled
- Fluid containment
- Straight or beaded sides
- Durable
- Corrosion resistant
- Safe and sanitary package
- Available lined or unlined
- Environmentally friendly

Common Uses

- Candy & confections
- Coffee
- Coatings
- Chemical overpacks
- Flavoring
- Lacquer
- Nuts
- Oil
- Powdered mixes
- Solvent
- Syrup
- Wax



**401 x 508
Beaded Side**

**401 x 509
Straight Side**

**502 x 608
Beaded Side**

**603 x 700
Beaded Side**

**610 x 713
Straight Side**

Standard diameters available with a steel end include 211 (2 11/16"), 300 (3"), 306 (3 3/8"), 401 (4 1/16"), 404 (4 1/4"), 502 (5 1/8"), 508 (5 1/2"), 602 (6 1/8"), 603 (6 3/16"), 610 (6 5/8"), 704 (7 1/4"), 714 (7 7/8"), 808 (8 1/2"), 914 (9 7/8"), and 1214 (12 7/8").

Standard diameters available with an EZ open end include 211 (2 11/16"), 306 (3 3/8"), 401 (4 1/16"), 502 (5 1/8"), 603 (6 3/16").



Many end options available



Ideal for packaging peanuts and tree nuts



Visually appealing **Snap-on Slip Cover**.
Available for hermetic cans in 401 and 602 diameters

TERMS & CONDITIONS

Packaging Solutions, Experienced Professionals

Allstate Can Corporation's team of experienced and courteous professionals will guide you every step of the way to create a package worthy of your brand.

PLACE YOUR ORDER:	Please contact our customer service department at 973/560-9030 (East Coast) or 775/841-6846 (West Coast).
MINIMUM ORDER:	Sold in full cartons only. Partial cartons are not available.
LEAD TIME:	Three to six weeks from receipt of order for standard items, longer lead times may apply July through November and January through March and for custom made items.
TERMS:	Net 30 days upon credit approval. (Allow 4 weeks for credit approval.) Visa, MasterCard, American Express accepted. No C.O.D. shipments.
F.O.B.:	Our factory. Allstate reserves the right to ship from different locations.
CLAIMS:	Claims for defective merchandise must be made within 30 days of receipt of product.
SHIPPING DAMAGE:	Shipping damage must be noted on the Bill of Lading at the time of delivery. All damage claims must be filed with the freight company. Allstate is not responsible for damage after merchandise has left our plants. Cartons are not UPS approved. Any damage on a UPS shipment is the customer's responsibility.
RETURNS:	Returned merchandise will not be accepted without prior written consent from Allstate Can Corporation. All returns are subject to a 25% restocking charge. Shipping and handling fees are the customer's responsibility.
OTHER:	Prices, minimum purchase requirements, carton packs and case weights are subject to change without notice. Please confirm carton and pricing information with factory.



ALLSTATE CAN CORPORATION
One Wood Hollow Road
Parsippany, NJ 07054